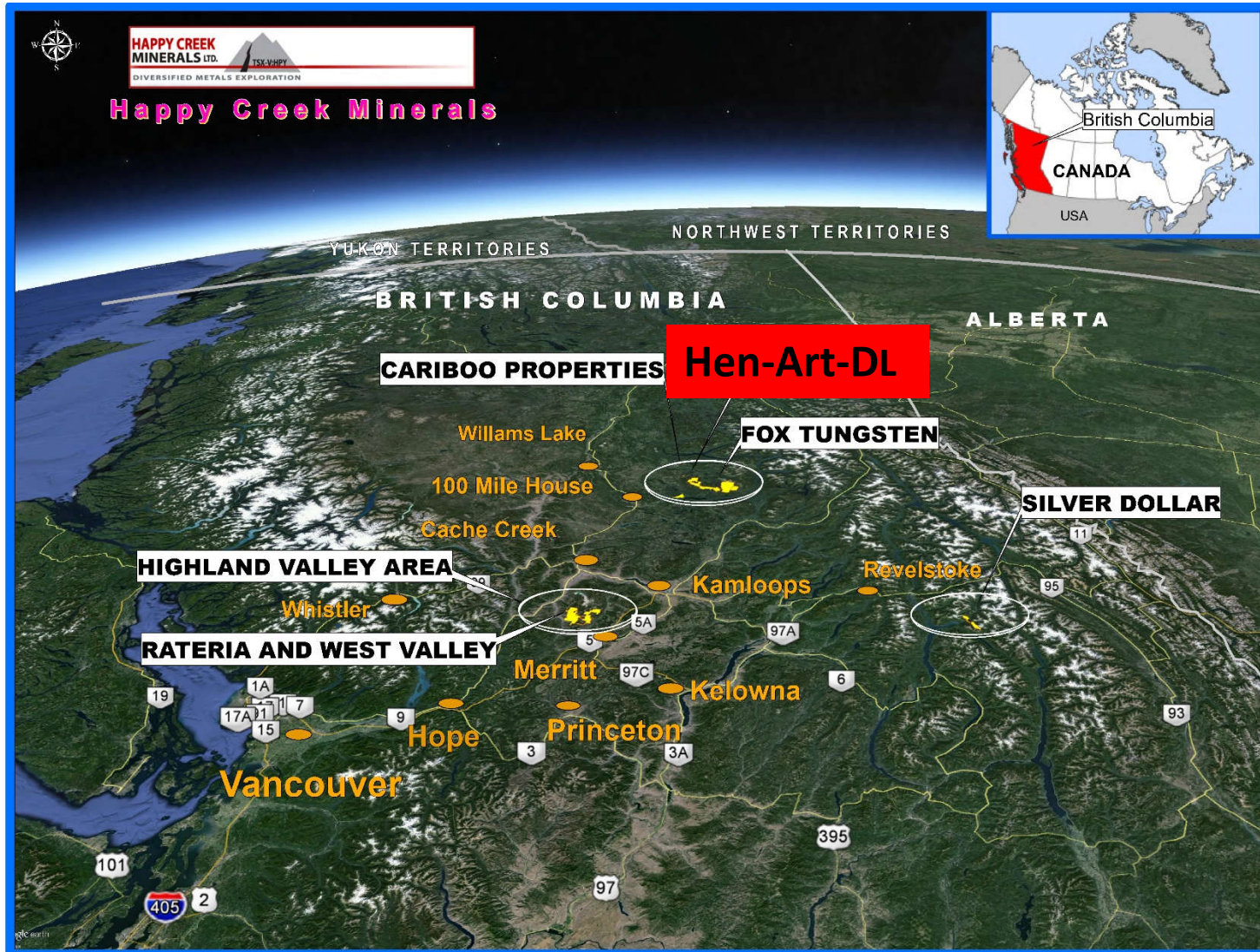


The Hen-Art-DL Property

Exploring for gold in the Cariboo district B.C., Canada



CAUTIONARY STATEMENT

Neither the TSX Venture Exchange nor its Regulation Services Provider (as that term is defined in the policies of the TSX Venture Exchange) accepts responsibility for the adequacy or accuracy of this presentation. The information provided is believed to be reliable however no assurance as to its accuracy, completeness or timeliness is represented herein.

This presentation may contain statements and projections such as plans, forecasts, prices, resources, profits, value, scale, and others that are forward looking and subject to risks and uncertainties more fully described in the Company's Prospectus, Financial Statements and Public Filings located on SEDAR. \$ are U.S. currency unless otherwise noted. "Diversified Metals Exploration" and the Company's logo and images are trademarks and copyright of Happy Creek Minerals Ltd. All Rights Reserved. David E. Blann, P.Eng., Director, is a Qualified Person under NI-43-101 has approved the technical content of this presentation.

Under NI43-101 (2001), the reader is cautioned that results or information from an adjacent property does not infer or indicate similar results or information will or does occur on the subject property. Historical information from the subject or adjacent property cannot not be relied upon as the Company's QP, a term which was created and defined under NI-43-101 has not prepared nor verified the historical information.

David Blann, P.Eng, President, CEO, Director

Mr. Blann has engaged in precious and base metal exploration, development and production stage projects for 30 years with a background in mining engineering technology and geological engineering. He has experience as Director and VP Exploration for several Jr. public companies and is the founder of the Company in 2005.

Walter Segsworth, Director, Executive Chair

Walter Segsworth has over 40 years of experience in mining in Canada and overseas and has served as a senior officer of several mining companies including Westmin Resources, where he was President and CEO, and Homestake Mining Company, where he was President and COO. Mr. Segsworth is currently lead independent director of Pan American Silver and a director of Sabina Gold & Silver Corporation. Mr. Segsworth is past Chairman of both the Mining Associations of British Columbia (BC) and Canada and was named B.C.'s Mining Person of the year in 1996.

Richard Lee, CMA, Chief Financial Officer

Mr. Lee has spent the past 30 years in public corporate accounting practice with and for publicly listed TSX companies, and has a wealth of financial, accounting and business experience. Mr. Lee has been involved with numerous startup companies in Canada and those registered with the SEC in the United States.

Rodger Gray, Director

Mr. Gray has over 20 years of experience as a stockbroker and officer of an IDA member firm. Mr. Gray was most recently engaged with Wellington-Altus Securities in Toronto, and prior to, the President and Chief Executive Officer of Toll Cross Securities Inc., a Toronto-based, full-service broker dealer specializing in the junior resource sector. Mr. Gray has previously acted as a Director and Vice-President investment banking, institutional equities, with First Associates Investments Inc. and prior thereto as President of St. James Securities Inc. Mr. Gray is a graduate of Laurentian University.

Michael Cathro, P. Geo., Director

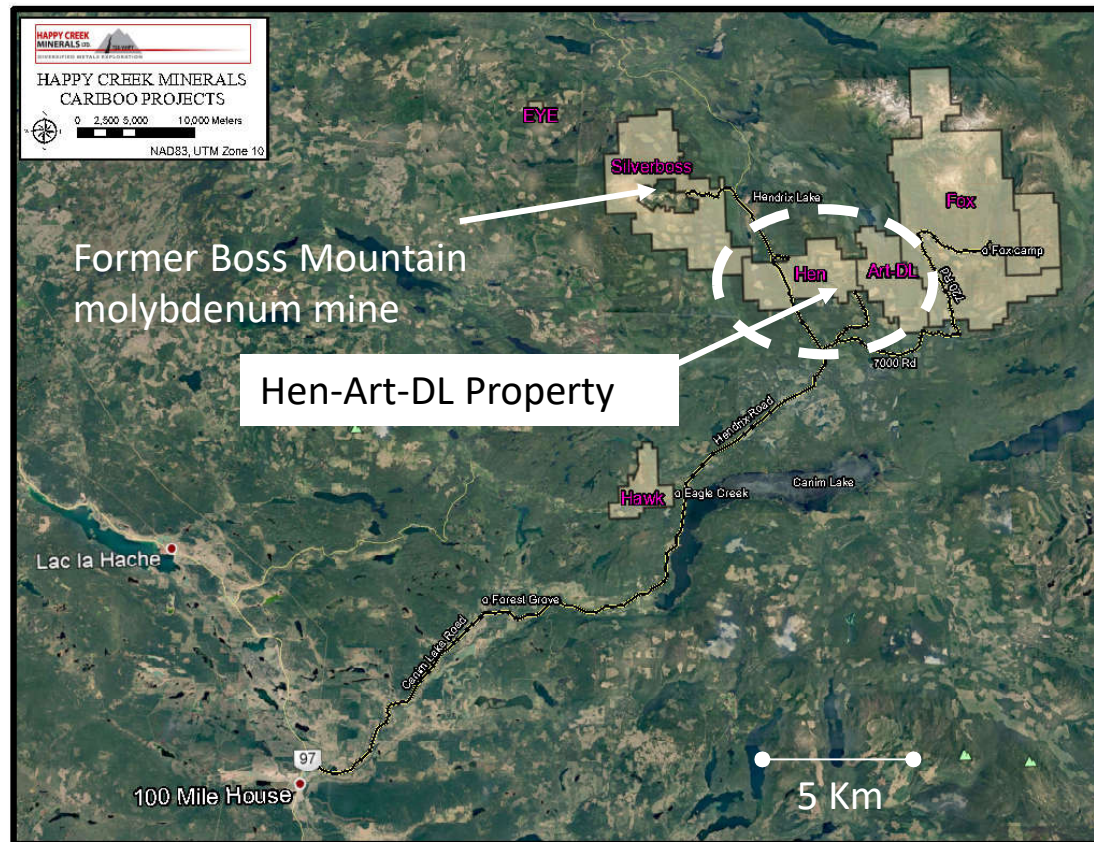
Mr. Cathro's career includes exploration with major and junior resource companies and 17 years with the B.C. Ministry of Energy and Mines in technical and management roles. Mr. Cathro has served as VP Exploration or Director of several Jr. resource companies.

Sassan Liaghat, PhD, Project Manager/ Senior Geologist

With a background in technical research with MDRU at UBC, Mr. Liaghat has experience as an exploration geologist with several companies including NovaGold Resources and the HDI Group. Mr. Liaghat performs project field management roles and manages the Company's geological database and GIS systems.

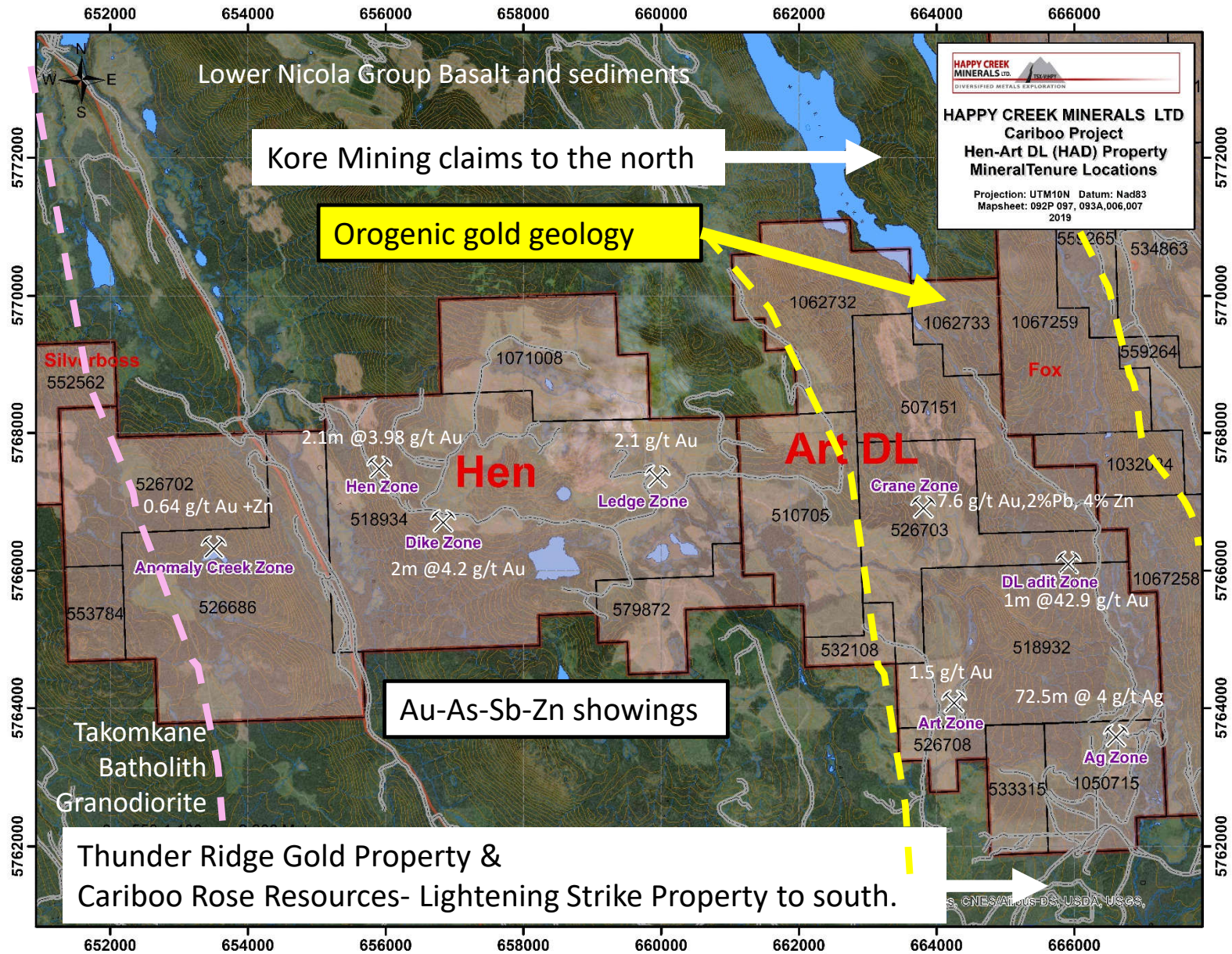
Company Policies

The Company strives to take due care with all its activities, respecting the environment, people and communities within our project areas. Policies that reflect our actions to be a responsible operator may be found under Corporate/ Policies on our website.



All 100% Owned

- Paved and gravel road access from town of 100 Mile House
- Near past-producing Boss Mountain Molybdenum Mine and Fox tungsten discovery
- Excellent infrastructure, essentially year-round exploration
- Low cost exploration in a highly productive geological setting.
- Multiple target types. Base metals, **gold, silver, tungsten**



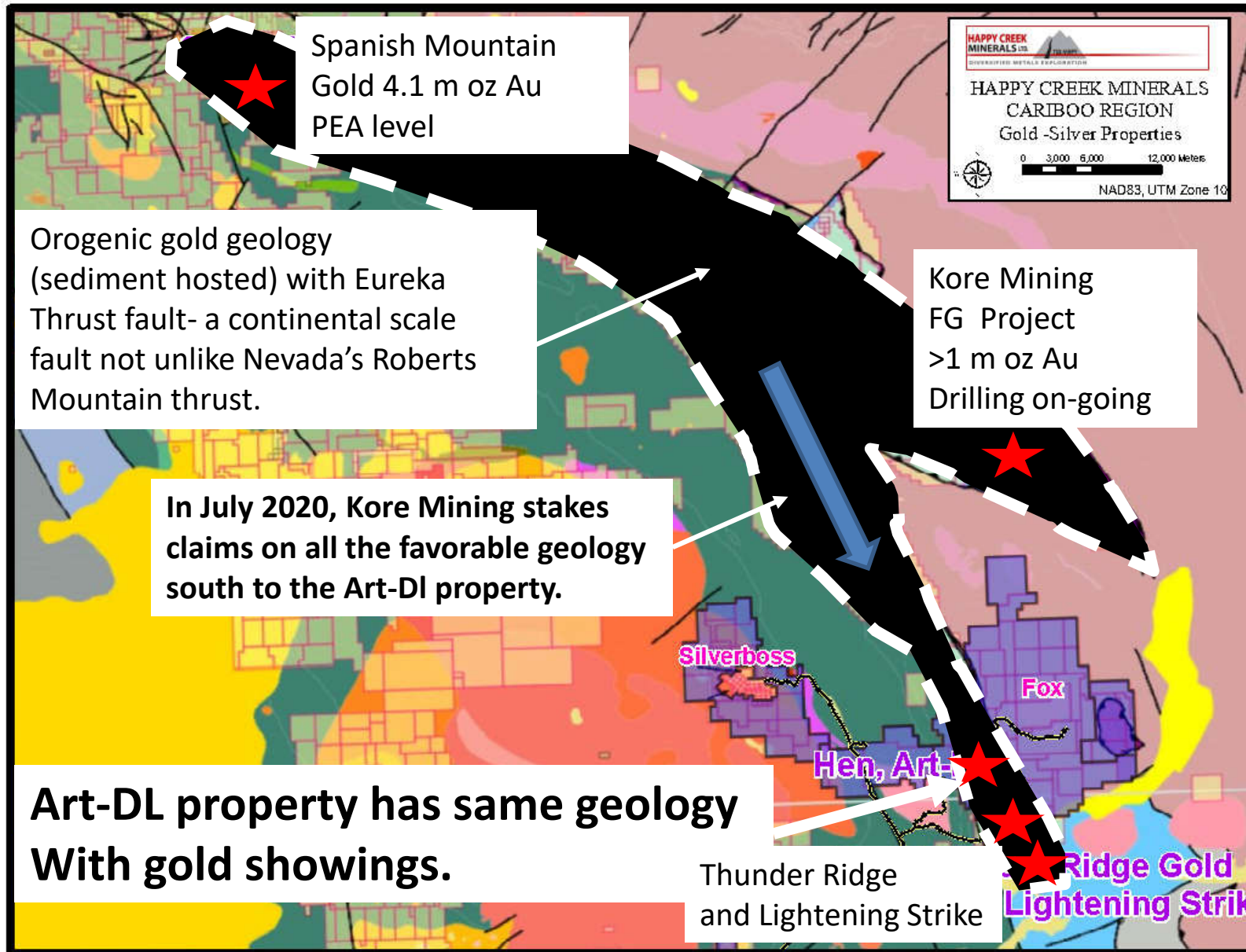


Figure 1 – Cariboo Gold District Map

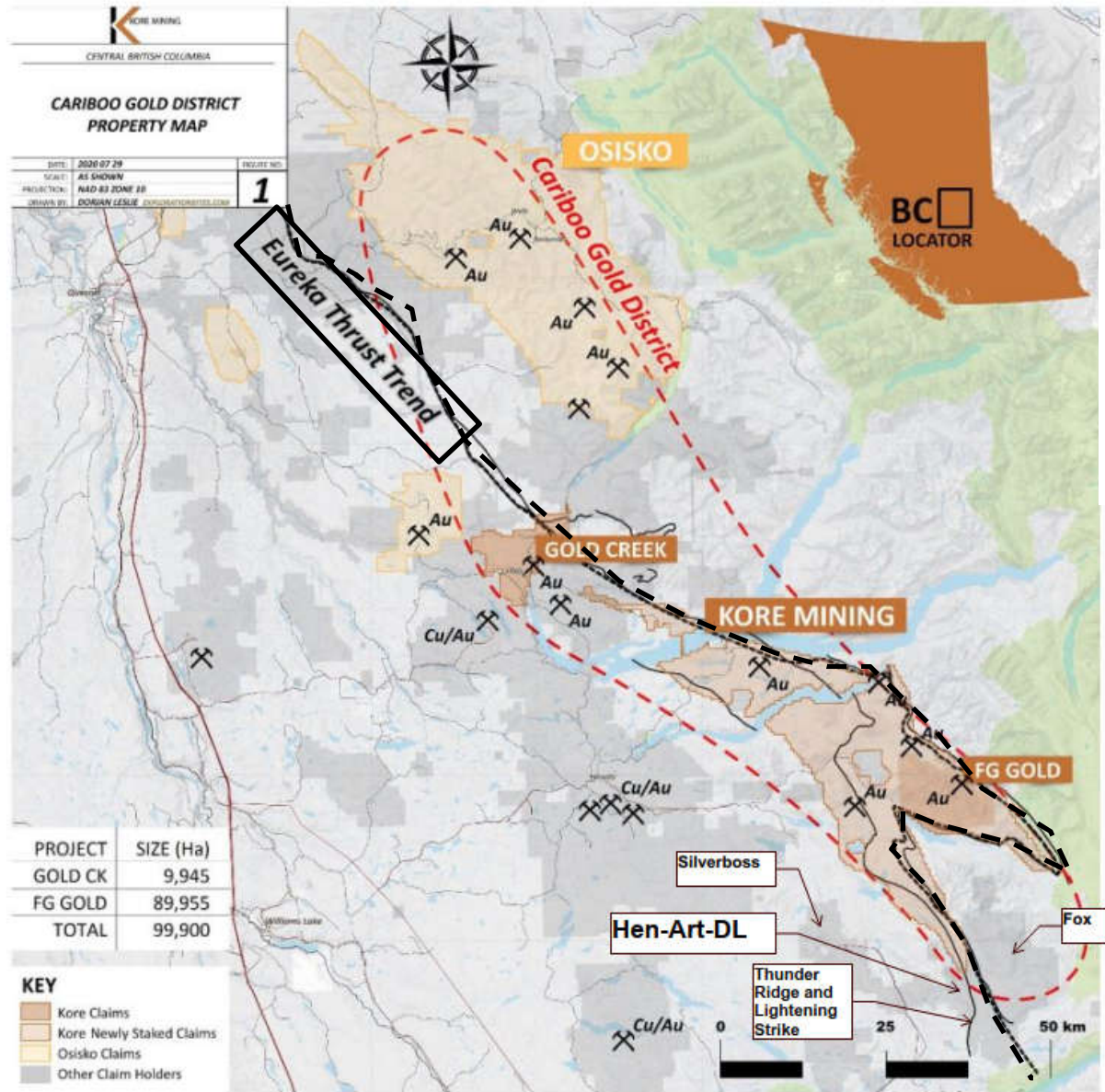
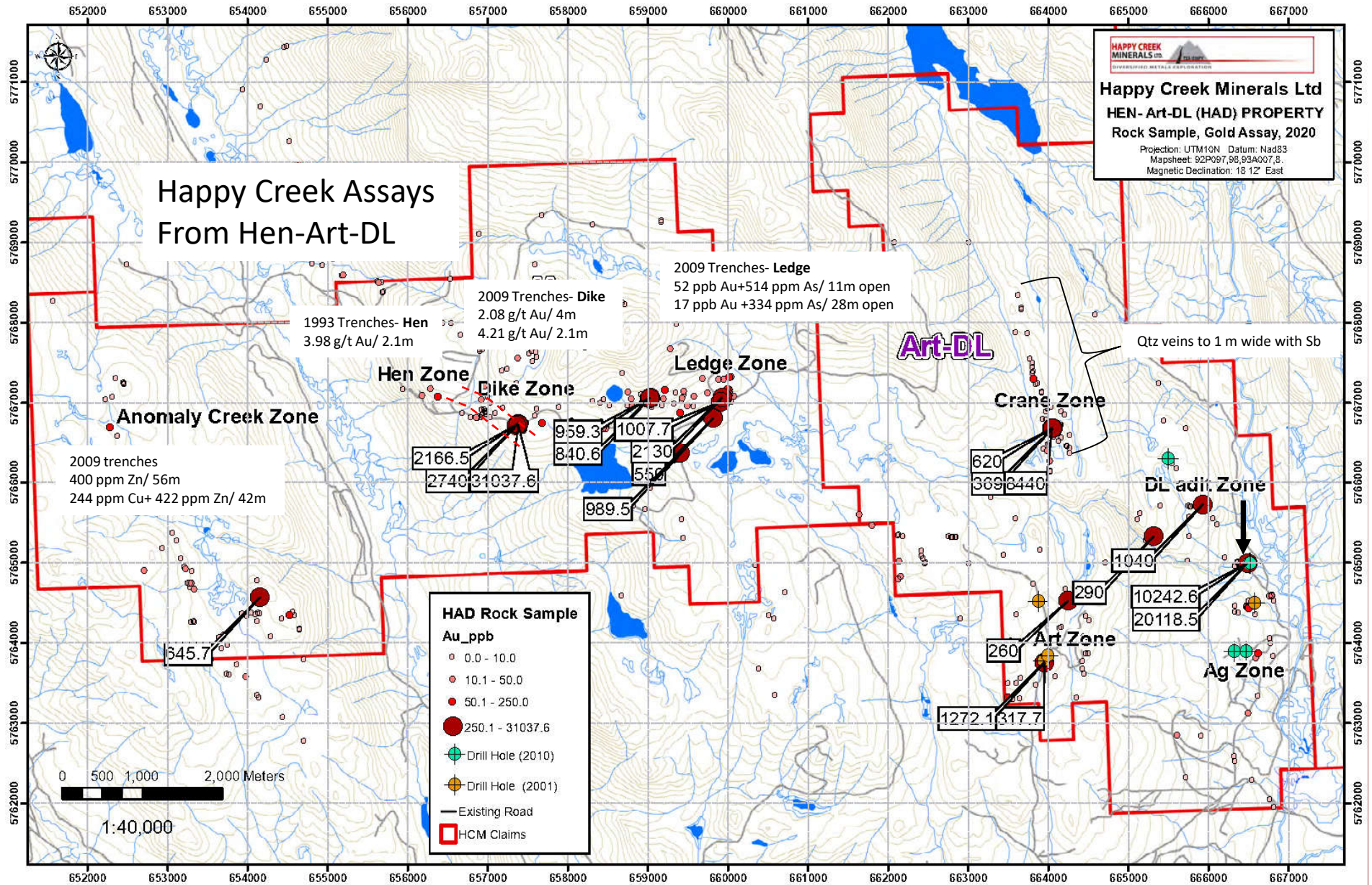
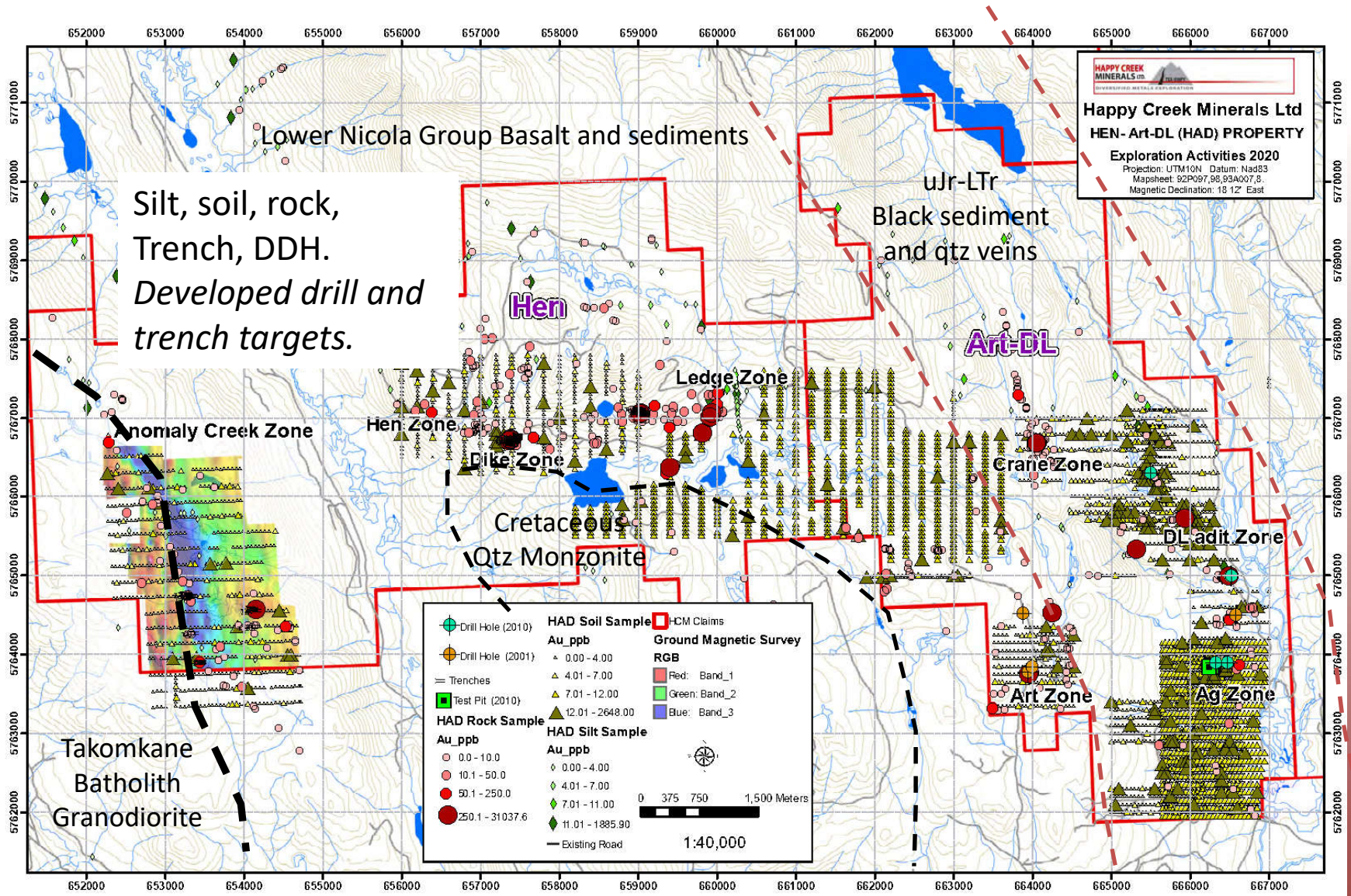


Figure modified from Kore Mining Ltd
July 30 2020

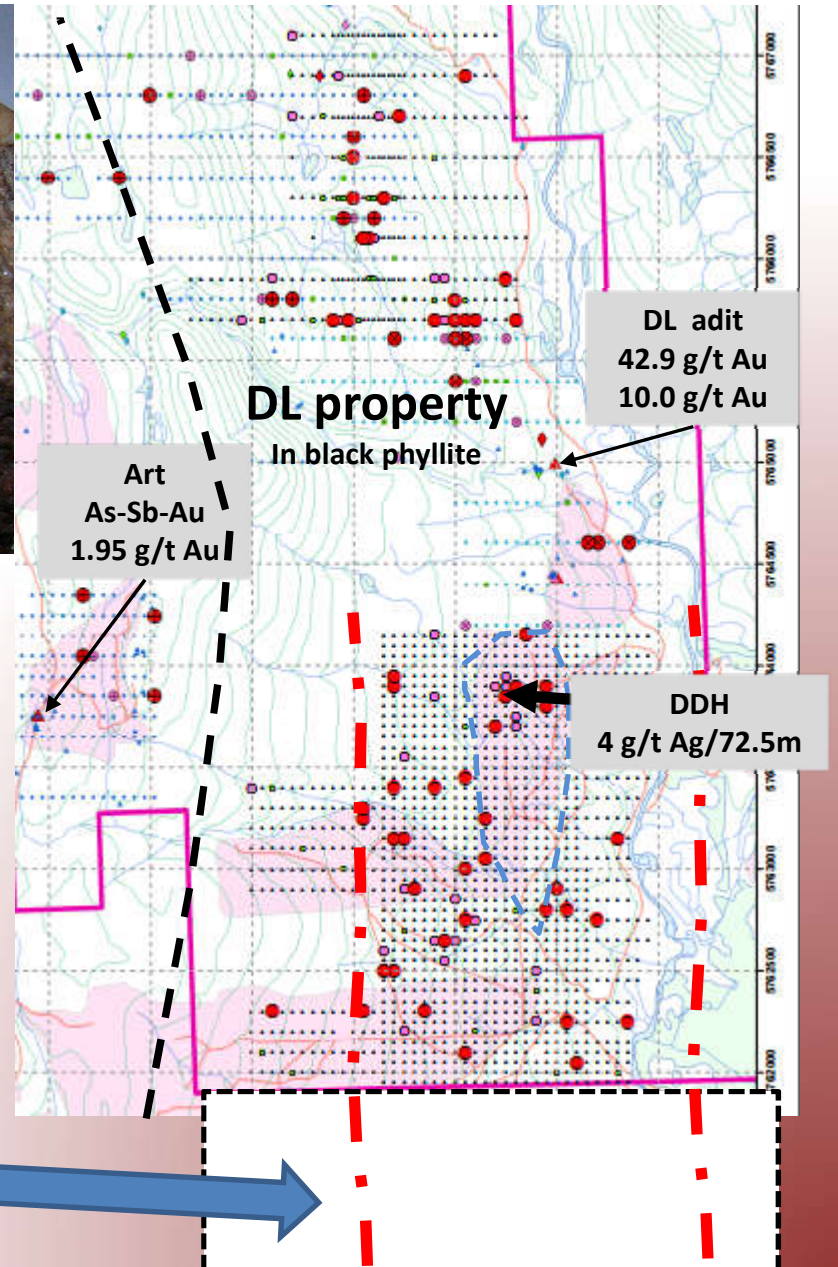
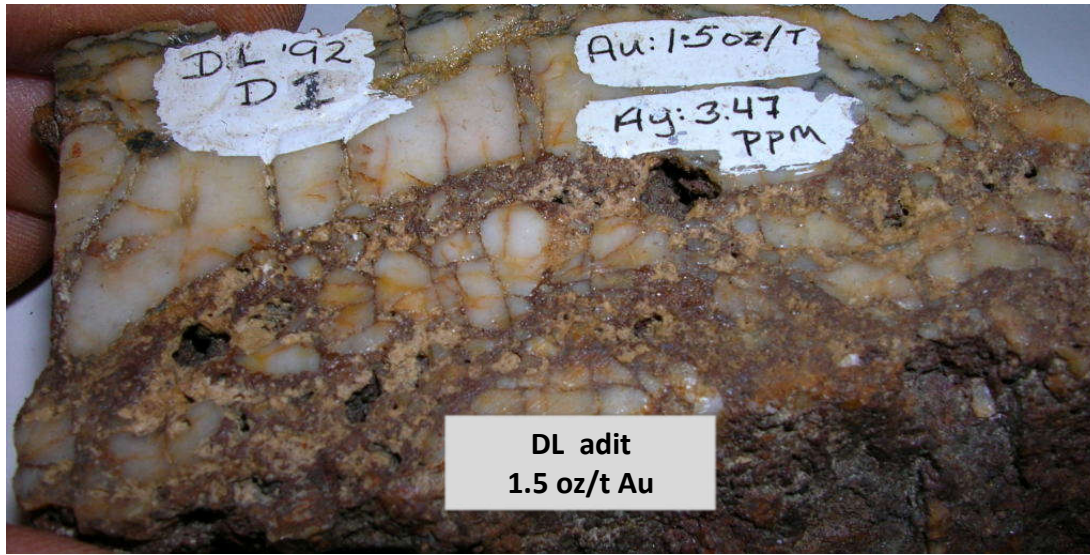
Some of the largest gold deposits in the world are orogenic type.

<https://www.koremMining.com/news/2020/7/30/kore-mining-takes-dominant-position-in-cariboo-gold-district-increasing-claims-by-330-to-1000-square-kilometres>





DL adjoins Thunder Ridge Au-Ag

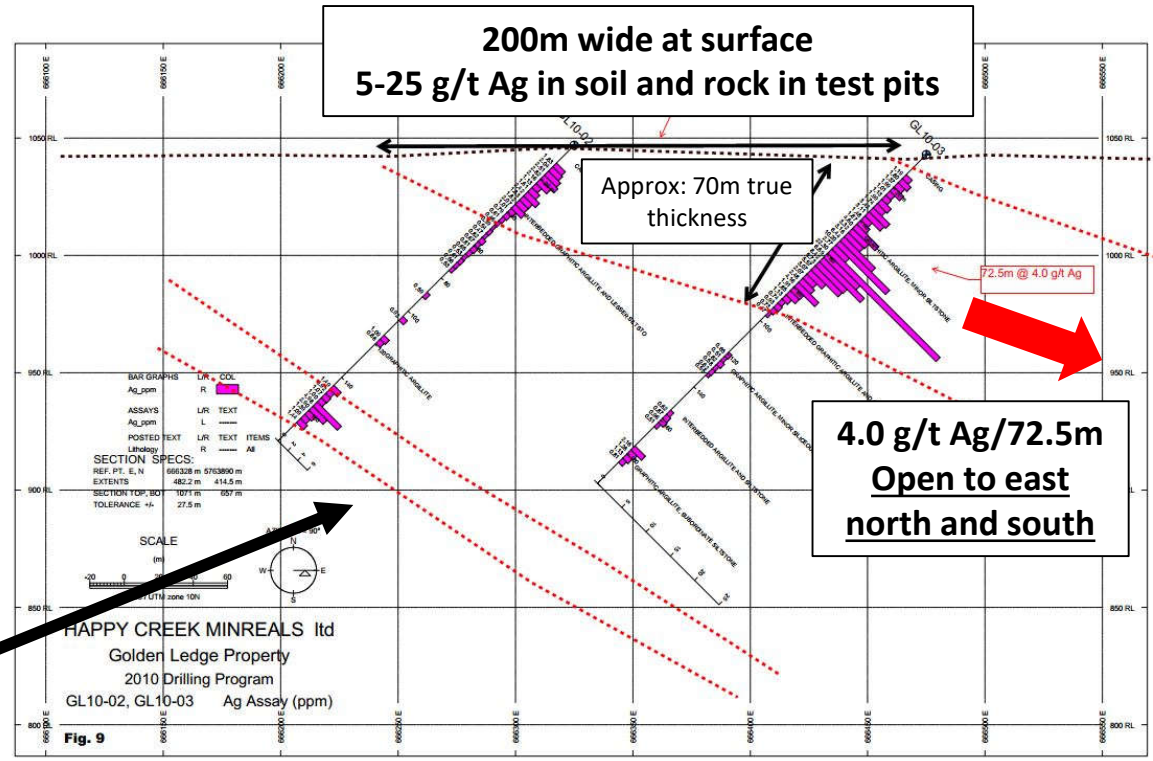
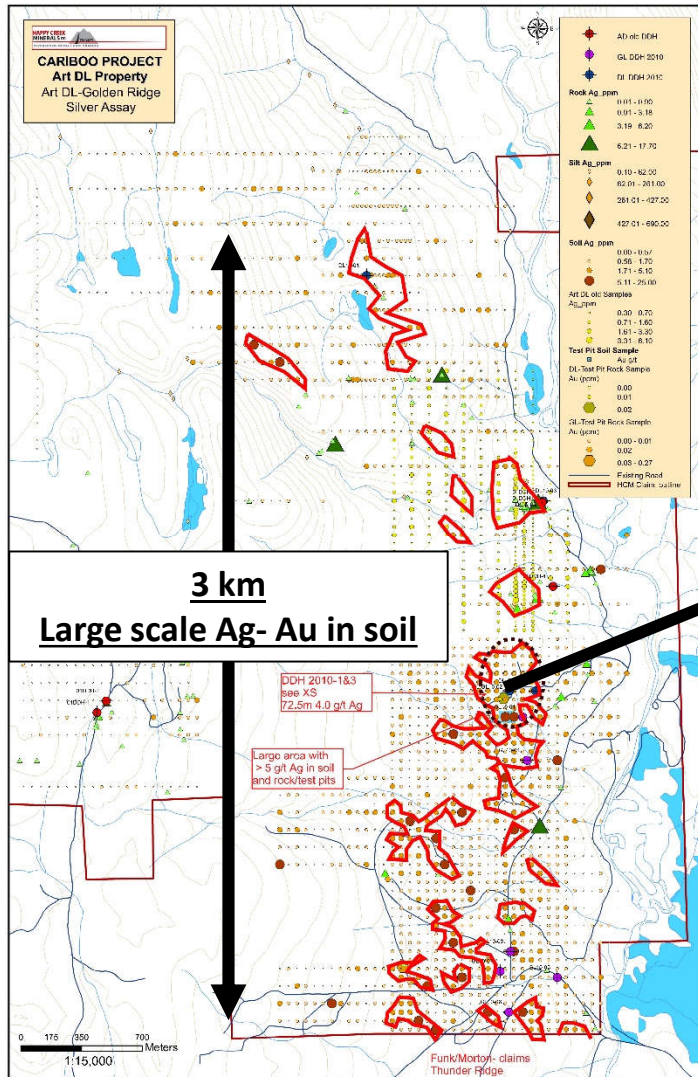


● The black phyllite unit hosts high grade gold (and silver) in quartz veins. DL is under-explored with gaps in data. A clear trend for many km along strike

● **Thunder Ridge** adjoins to the south: high gold in drill holes:

- 2.5m @ 45.9 g/t gold
- 1.5m @ 4.83 g/t Au, 232 g/t Ag
- 1.5m @ 11.4 g/t Au
- 1.5m @ 39.5 g/t Au
- 3.0m @ 18 g/t Au

- Results from Spanish Mountain Gold 2008-2012 See Cautionary statements



At-surface 5-25 g/t silver in soil and test pits
4.0 g/t Ag/ 72.5m in DDH- open

This is a thick mineralized zone – multiple zones present
Could Ag transition to Au?

- **Hen: Gold-As in Nicola Group- calcic skarn**
- **Art-DL: Gold-Silver in Quartz veins, silicified zones with an orogenic-gold deposit model**
 - **New gold + base metal discovery (Crane) found in 2018 on recently built logging roads.**
 - **Large scale targets – Spanish Mountain, FraserGold (FG) are >1 m oz Au deposits**
 - **Active area- Three public companies actively working in the camp.**
 - **Excellent gold drill results just a few hundred metres south of DL**
 - **Trench and drill targets**



**Hen Dike zone
2.1m @ 4 g/t Au beside road
Grabs up to 31 g/t Au**



2018- Crane: 7.6 g/t Au, 2% Pb, 4% Zn, 0.16% copper- VMS?



**DL: Orogenic gold
An attractive large scale target**

A Low-cost exploration area with large scale gold discovery potential.

July 27, 2020

Shares outstanding: 105,029,712

Warrants: 641,820 @ avg. \$0.17

Options: 4,750,000 @ avg. \$0.20

Year High: \$0.14

Year Low: \$0.06

CONTACT

Happy Creek Minerals Ltd.

Suite 460-789 West Pender Street

Vancouver, B.C. Canada V6C 1H2

Email: info@happycreekminerals.com

Website: www.happycreekminerals.com

David Blann, P.Eng. President, CEO

Phone: (1) 604-662-8310 press #1

Toll Free: 1-877-662-8310